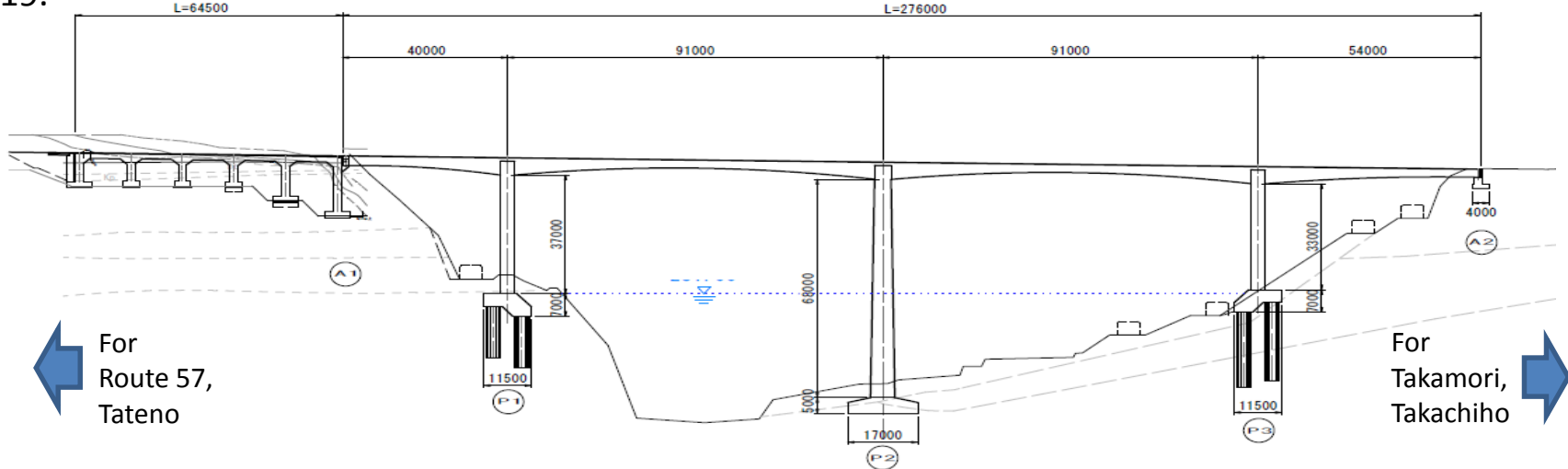


Aso-Choyo-ohashi Bridge

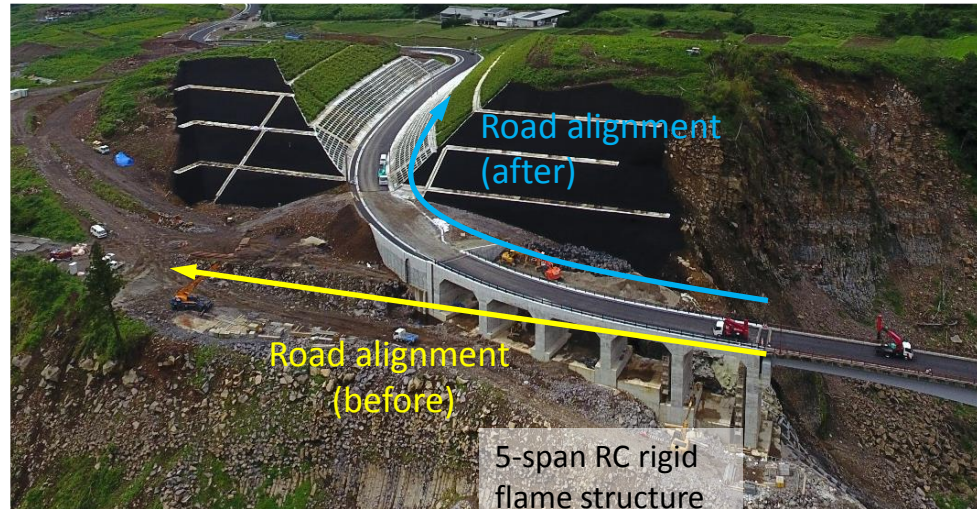
The Aso-Choyo-ohashi Bridge is a four-span continuous PC rigid-frame bridge constructed in 1993. It suffered great damages due to the Kumamoto earthquake in April 2016. For example, slope failure caused the A1 abutment on the Tateno side of the bridge to subside, resulting in a gap of approximately 2 m between the abutment and the bridge girder. The earthquake also caused large cracks in the reinforced concrete piers.

On August 27, 2017, a year and four months after the earthquake, emergency restoration work was completed and the bridge was opened to traffic. The restoration work was fully completed in March 2019.



In the process of restoration, various innovations were employed not only to restore the road to its original condition, but also to prevent similar damages in the event of a major earthquake in the future.

For example, on the Tateno side, the road alignment was changed to move away from the slope in order to reduce the impact on the road even if the slope were to collapse again. The bridge abutment was also reconstructed with a different structure .



Restoration (Tateno side)



The Aso-Choyo-ohashi Bridge immediately after the damage caused by the Kumamoto Earthquake

Installed by:
Minamiaso Village



Kumamoto Reconstruction Project Office, Kyushu Development Bureau, MLIT
Kumamoto Earthquake Recovery Division, National Institute for Land and
Infrastructure Management, MLIT